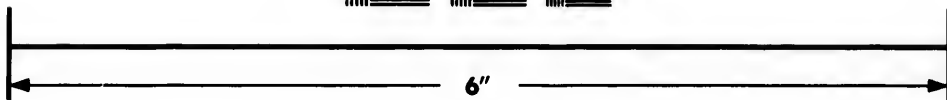
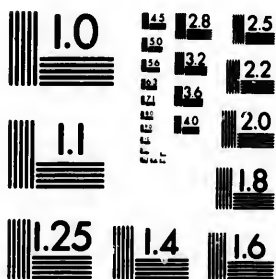


**IMAGE EVALUATION
TEST TARGET (MT-3)**



**Photographic
Sciences
Corporation**

23 WEST MAIN STREET
WEBSTER, N.Y. 14580
(716) 872-4503

1.5
1.6
1.8
2.0
2.2
2.5
2.8
3.2
3.6
4.0

**CIHM/ICMH
Microfiche
Series.**

**CIHM/ICMH
Collection de
microfiches.**



Canadian Institute for Historical Microreproductions / Institut canadien de microreproductions historiques

1.5
1.6
1.8
2.0
2.2
2.5
2.8
3.2
3.6
4.0

© 1984

Technical and Bibliographic Notes/Notes techniques et bibliographiques

The Institute has attempted to obtain the best original copy available for filming. Features of this copy which may be bibliographically unique, which may alter any of the images in the reproduction, or which may significantly change the usual method of filming, are checked below.

L'Institut a microfilmé le meilleur exemplaire qu'il lui a été possible de se procurer. Les détails de cet exemplaire qui sont peut-être uniques du point de vue bibliographique, qui peuvent modifier une image reproduite, ou qui peuvent exiger une modification dans la méthode normale de filmage sont indiqués ci-dessous.

- Coloured covers/
Couverture de couleur
- Covers damaged/
Couverture endommagée
- Covers restored and/or laminated/
Couverture restaurée et/ou pelliculée
- Cover title missing/
Le titre de couverture manque
- Coloured maps/
Cartes géographiques en couleur
- Coloured ink (i.e. other than blue or black)/
Encre de couleur (i.e. autre que bleue ou noire)
- Coloured plates and/or illustrations/
Planches et/ou illustrations en couleur
- Bound with other material/
Relié avec d'autres documents
- Tight binding may cause shadows or distortion
along interior margin/
Lare liure serrée peut causer de l'ombre ou de la
distortion le long de la marge intérieure
- Blank leaves added during restoration may
appear within the text. Whenever possible, these
have been omitted from filming/
Il se peut que certaines pages blanches ajoutées
lors d'une restauration apparaissent dans le texte,
mais, lorsque cela était possible, ces pages n'ont
pas été filmées.
- Additional comments:/
Commentaires supplémentaires:

- Coloured pages/
Pages de couleur
- Pages damaged/
Pages endommagées
- Pages restored and/or laminated/
Pages restaurées et/ou pelliculées
- Pages discoloured, stained or foxed/
Pages décolorées, tachetées ou piquées
- Pages detached/
Pages détachées
- Showthrough/
Transparence
- Quality of print varies/
Qualité inégale de l'impression
- Includes supplementary material/
Comprend du matériel supplémentaire
- Only edition available/
Seule édition disponible
- Pages wholly or partially obscured by errata
slips, tissues, etc., have been refilmed to
ensure the best possible image/
Les pages totalement ou partiellement
obscurcies par un feuillet d'errata, une pelure,
etc., ont été filmées à nouveau de façon à
obtenir la meilleure image possible.

This item is filmed at the reduction ratio checked below/
Ce document est filmé au taux de réduction indiqué ci-dessous.

10X	14X	18X	22X	26X	30X
<input type="checkbox"/>	<input type="checkbox"/>	<input type="checkbox"/>	<input checked="" type="checkbox"/>	<input type="checkbox"/>	<input type="checkbox"/>
12X	16X	20X	24X	28X	32X

The copy filmed here has been reproduced thanks to the generosity of:

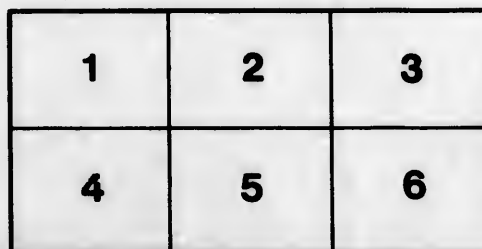
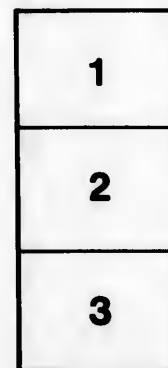
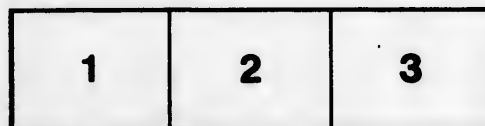
Library of the Public
Archives of Canada

The images appearing here are the best quality possible considering the condition and legibility of the original copy and in keeping with the filming contract specifications.

Original copies in printed paper covers are filmed beginning with the front cover and ending on the last page with a printed or illustrated impression, or the back cover when appropriate. All other original copies are filmed beginning on the first page with a printed or illustrated impression, and ending on the last page with a printed or illustrated impression.

The last recorded frame on each microfiche shall contain the symbol \rightarrow (meaning "CONTINUED"), or the symbol ∇ (meaning "END"), whichever applies.

Maps, plates, charts, etc., may be filmed at different reduction ratios. Those too large to be entirely included in one exposure are filmed beginning in the upper left hand corner, left to right and top to bottom, as many frames as required. The following diagrams illustrate the method:



L'exemplaire filmé fut reproduit grâce à la générosité de:

La bibliothèque des Archives
publiques du Canada

Les images suivantes ont été reproduites avec le plus grand soin, compte tenu de la condition et de la netteté de l'exemplaire filmé, et en conformité avec les conditions du contrat de filmage.

Les exemplaires originaux dont la couverture en papier est imprimée sont filmés en commençant par le premier plat et en terminant soit par la dernière page qui comporte une empreinte d'impression ou d'illustration, soit par le second plat, selon le cas. Tous les autres exemplaires originaux sont filmés en commençant par la première page qui comporte une empreinte d'impression ou d'illustration et en terminant par la dernière page qui comporte une telle empreinte.

Un des symboles suivants apparaîtra sur la dernière image de chaque microfiche, selon le cas: le symbole \rightarrow signifie "A SUIVRE", le symbole ∇ signifie "FIN".

Les cartes, planches, tableaux, etc., peuvent être filmés à des taux de réduction différents. Lorsque le document est trop grand pour être reproduit en un seul cliché, il est filmé à partir de l'angle supérieur gauche, de gauche à droite, et de haut en bas, en prenant le nombre d'images nécessaire. Les diagrammes suivants illustrent la méthode.

ails
du
odifier
une
mage

rrate
to

pelure,
n à

32X

M

P

L

BY-LAWS

OF THE

MUNICIPAL COUNCIL

OF THE

DISTRICT OF LONDON,

PASSED AT THE FIRST SESSION OF

1848.

WILLIAM NILES, WARDEN.

LONDON, C. W.:—PRINTED BY WILLIAM SUTHERLAND,

“Evangelical Pioneer” Office, Court-House Square.

BY-LAWS

MEDICAL COUNCIL

DISTRICT OF LONDON

1812

WILLIAM BELL & CO. PRINTERS

ADAM & CO.

PRINTED BY W. BELL & CO. AT THE DISTRICT OF LONDON

To a
"of
there
Dist
Dist
Lab
peri
com
cillo
cillo
Dist
of t
labo

And J

BY-LAWS.

BY-LAW

*To amend the Bye-Law to Regulate the Commutation
of Statute Labour in the District of London.*

[Passed 5th February, 1848.]

WHEREAS it is expedient to amend the By-Law passed by this Council on the 6th February, 1847, and intituled, a "By-Law to regulate the Commutation of Statute Labour in the District of London;" it is, therefore, hereby enacted by the Council of the London District, that when any of the land-holders in the said District are desirous of compounding for the Statute Labour respectively performable by them, for a longer period than one year, it shall be lawful for them to compound for the same with the Councillor, or Councillors, of their respective Townships; and the Councillor, or Councillors, of the different Townships in this District, are hereby authorised to direct the laying out of the composition-money paid and performance of the labour.

WILLIAM NILES,

J. B. STRATHY, Clerk. Wardens

BY-LAW

To Renew and Continue in Force the Bye-Law intituled, a "Bye-Law to Raise a Sum of Money for the Purpose of affording Relief to the Indigent, Sick, and Infirm Persons within the Township of Yarmouth," and to Raise a Sum of Money in the Township of Dorchester, for the same Purpose in the said Township.

[Passed 5th February, 1848.]

WHEREAS it is expedient and necessary, in compliance with Resolutions passed at the Annual Township Meetings of the Townships of Yarmouth and Dorchester, to raise certain Sums in the said Townships, for the purpose of affording Relief to the Indigent, Sick, and Infirm Persons in the said Townships: *It is therefore hereby Enacted*, by the Council of the London District, that the Bye-Law intituled a "Bye-Law to Raise a Sum of Money for the Purpose of affording Relief to the Indigent, Sick, and Infirm Persons in the Township of Yarmouth," be, and the same is, hereby renewed and continued in force for this year.

And it is further Enacted, that the sum of forty pounds shall be raised, levied, and collected in the Township of Dorchester, in the same manner, and for the above purpose, as regards said Township; and that the said sum shall be paid over, applied, and accounted for under the same provisions as stated in the Bye-Law above referred to.

WILLIAM NILES, *Warden.*

J. B. STRATHY, *CLERK.*

BY-LAW

To set off Enumeration Divisions, and to appoint Enumerators for taking the Census, and obtaining Statistical Information, in the London District.

[Passed 5th February, 1848.]

WHEREAS it is necessary to set off Enumeration Divisions, and to appoint Enumerators for taking

the C
this D
11th
the C
in the
erally
A
sors
be, a
their
requ

J.

To

W
tric
crib
the
and
as

br
be
or
ne
m
li
ro
2

the Census, and obtaining Statistical Information in this District, under the provisions of the Act 10th and 11th Vict. chap. 14—it is therefore hereby enacted by the Council of the London District, that each Township in the said District shall form, and they are hereby severally constituted Enumeration Divisions.

And it is further enacted, that the Township Assessors of the respective Townships in this District, shall be, and they are hereby appointed, Enumerators for their respective divisions, for obtaining the information required by the said Act.

WM. NILES, *Warden.*

J. B. STRATHY, *Clerk.*

BY - L A W

To establish certain New Roads in the London District therein described.

[Passed 5th February, 1848.]

WHEREAS it is expedient and necessary for the better accommodation of the inhabitants of this District, to establish the several roads hereinafter described, it is therefore hereby enacted by the Council of the London District, that the following roads shall be, and the same are hereby established and ordered to run as follows, viz. :—

IN THE TOWNSHIP OF SOUTHWOLD.

No. 1.—Commencing in the north limit of the north branch of Talbot Road, in said Township, in the limit between lots number thirty-six and thirty-seven north on said road, then north 44° west, as the magnetic needle now points forty-six chains and eighty links, more or less, to a point just three chains and twenty links southerly from where a post now stands pointing out the centre of said lot number thirty-six; then north $20\frac{1}{2}^{\circ}$ west; five chains; then north $71^{\circ} 30'$ west, five

chains and twenty-five links to intersect the line aforesaid produced from the place of beginning, on the course first mentioned, then producing the line run from the place of beginning to the allowance for road in rear of the lots mentioned,—the line in the centre of the road, and the road to be forty feet wide.

No. 2.—Commencing in the south limit of the allowance for road in rear of the lots south on Talbot Road east, in the said Township of Southwold, at a point where a post now stands, at the foot of a large basswood tree, being at the limit between lot number one in the Third Concession, and lot number one in the Fourth Concession west of mill road in the said Township, as the said limit is now established, then south $44^{\circ} 5'$ east, as the magnetic needle now points, along the line heretofore run, and now known as the limit between the Third and Fourth Concessions aforesaid, to the allowance for road which is in front of the said Fourth Concession,—the new road to be four rods wide and on the left side of the line. Provided always, that the applicants for said road shall first pay the owners of the land after the rate of one pound, ten shillings, per acre, for the land taken for said road.

IN THE TOWNSHIP OF LOBO.

No. 3.—Commencing in the centre of the road between lots number four and five in the Tenth Concession of said Township, and in the northerly limit of the allowance for road in front of the said Concession, then north $44^{\circ} 50'$ west, line in the centre of the road, which is four rods wide, in a direct line to intersect the southerly limit of the allowance for road in rear of the said Concession, in the centre of the road between the said lots number four and five in the said Concession.

IN THE TOWNSHIP OF DUNWICH.

No. 4.—Commencing in the southerly side of the allowance for road between the Third and Fourth Con-

cession
allow
where
then
run
sions
Thar
and
sion,
A, to
ance
cess
less,
cess
five
Sixt
limi
the
said
N
of t
Thi
cess
in
two
the
the
Co
the
nu
Co
the
for
to
Fo
lo
th
es
fo

cessions of said Township, and in the west side of the allowance for road between lots number six and seven, where a post was standing at the time of the survey, then north 45° west, along a line for a road heretofore run out, through the Third, Second and First Concessions, and through broken Concession A to the River Thames, then commencing at the place of beginning, and running south 45° east, through the Fourth Concession, the Gore, the Fifth Concession, and Concession A, to a point about thirteen rods northward of the allowance for road between Concession A and the Fifth Concession south of A; then south eighteen rods, more or less, to intersect the allowance for road between Concession A and said Fifth Concession; then south forty-five degrees east in a direct line through the Fifth, Sixth, and Seventh Concessions, to intersect the north limit of Talbot Road, where a post has been planted at the south-easterly angle of said lot number six in the said Seventh Concession.

No. 5.—Commencing at a point in the southerly side of the allowance for road between the Second and Third Concessions, at two rods westerly along the Concession Road from the point where a post now stands, in the limit between lots number twenty-three and twenty-four in the Third Concession of said Township; then north forty-five degrees west in a direct line through the Second and First Concessions, and through broken Concession A to the water's edge of the River Thames, then commencing at the said post planted between lots number twenty-three and twenty-four in the said Third Concession, and in the south limit of the road between the Second and Third Concessions aforesaid, then south forty-five degrees east, through the Third Concession to the southerly side of the road between the Third and Fourth Concessions, then westerly along the road allowance sixteen rods, to the limit between said lots in the Fourth Concession; then south forty-five degrees east through the Fourth Concession, to the allowance for road in front of the Gore; then westerly along the

front of the Gore ten rods to the limit between said lots in the Gore, then south forty-five degrees east through the Gore and Fifth Concession, to the allowance for road in front of Concession A, then easterly along the road in front of Concession A thirteen rods to the limit between said lots number twenty-three and twenty-four, then south forty-five degrees east through Concession A to the allowance for road, in front of the south Fifth Concession.

IN THE TOWNSHIP OF MOSA.

No. 6.—Commencing in the south limit of the Longwoods Road, in the limit between lots number twenty-six and twenty-seven, where a post has been planted, then south forty-five degrees east, forty-seven chains and twenty-five links to the water's edge of the River Thames, the line to be on the east side of the road, and the road to be forty feet wide. Provided always, that the parties applying for the said new road, shall first pay Mr. Gardiner, the owner of part of the land occupied by said new road, at the rate of one pound per acre; and Mr. Fleming, the owner of the other part, the sum of four pounds per acre; for the land taken for said new road.

IN THE TOWNSHIP OF DELAWARE.

No. 7.—Commencing at a point in the east limit of the allowance for road between the Townships of Delaware and Westminster, at one chain and fifty-four links southerly from a point where a post has been planted, between lots number five and six in the west gore of Westminster, then south seventy-one degrees west as the magnetic needle now points, the line in the centre of the new road, which is sixty-six feet wide, thence keeping along the centre of the new road now opened in a direct line through the Fourth, Third, Second and First Concessions of Delaware, to intersect the allowance for road in front of the said First Concession, in the centre of this road as now opened.

No.
mont
allowa
south
west;
to the
cessio

No
Egre
road
remo
to th
chain

N
mon
the
and
Egr
in a
sion
ces
two
nov
sid
the
of
in
nu
ce
tw
lin
la
fo
li
t

IN THE TOWNSHIP OF ADELAIDE.

No. 8.—Commencing in the south limit of the Egremont Road, in the said Township, in the centre of the allowance for road between lots number three and four south of the said road, thence, south fifteen degrees west; the line in the centre of the road, in a direct line to the allowance for road in front of the Second Concession; the road to be one chain wide.

No. 9.—Commencing in the north side of the said Egremont Road, in the east limit of the allowance for road between lots number three and four, north of Egremont Road aforesaid, then north fifteen minutes east, to the rear of the First Concession; the road to be one chain wide, and the line on the east side of the road.

No. 10.—Commencing in the north limit of the Egremont Road in the said Township, and in the centre of the allowance for road between lots number twenty-one and twenty-two in the First Concession north of said Egremont Road, then north twenty-five minutes east, in a direct line through the First and Second Concessions, to intersect the road in front of the Second Concession, in the centre of the road between lots number twenty-one and twenty-two, where the original posts now stand, marking the east and west limits of said side-road; and also commencing in the north limits of the road between the Second and Third Concessions of the said Township, where a post has been planted in the east limit of the allowance for road between lots number twenty-one and twenty-two in the Third Concession, and at the south-west angle of lot number twenty-two, then north forty minutes east, in a direct line to where a post has been planted at the root of a large white oak tree, in the south limit of the allowance for road between the Townships of Adelaide and Williams, and in the east limit of the allowance for road between said lots,

IN THE TOWNSHIP OF DORCHESTER, (Southern Division.)

No. 11—Commencing in front of the Second Concession, and at the distance of three chains and fifty links from the limit between lots number twenty-one and twenty-two, on a course of south seventy-eight degrees thirty minutes west, then north sixty-four degrees twenty minutes west magnetically, six chains sixty-four links; then south eighty-five degrees twenty minutes west three chains sixty-three links; then south fifty-six degrees forty minutes west eleven chains fifty links to the line in front of the Second Concession,—the line in the centre of the road, and the road to be four rods wide. Provided always that the parties applying for the road shall first pay the expenses attending the survey of said road.

And it is further Enacted, that the width of the road established by this Council, in the Township of London, and leading to the "Wharncliffe Highway," by By-Law No. III. shall be forty feet only.

WM. NILES, *Warden.*

J. B. STRATHY, *CLERK.*

BY - L A W

To Repeal part of the By-Law No. 122, imposing Assessments for Building Common School-Houses, in the London District.

[Passed 5th February, 1848.]

WHEREAS it is expedient to repeal so much of the By-Law No. 122, intituled a "By-Law to raise certain sums of money for the purpose of Building School-Houses in the London District," as imposes an Assessment on School-Section No. 8 in the Township of Malahide, for the purpose of erecting a School-House therein—it is therefore hereby enacted by the Council

of the London District, that so much of the above By-Law as imposes any assessment on the above-mentioned School-Section shall be and the same is hereby repealed.

WM. NILES, *Warden.*

J. B. STRATHY, *CLERK.*

BY-LAW

To Regulate the Fees of Pound-Keepers in the London District.

[Passed 5th February, 1848.]

WHEREAS, it is expedient to establish a Scale of Fees to be received by the Pound-Keepers in the several Townships of this District, it is therefore hereby enacted by the Council of the London District, that the following Fees, and no more, shall be chargeable by the several Pound-Keepers in this District, viz.

For every stallion or bull impounded, 5s.

Do. ram or boar do. 5s.

Do. horse, ass or mule do. 1s. 6d.

For horned cattle, over 3 yrs., per head, 1s. 3d.

Do. do. under 3 yrs. do. 1s.

For sheep or swine, each, 9d.

For feeding horses, per day, each, 7½d.

Do. horned cattle, do. do. 4d.

Do. swine do. do. 2d.

Do. sheep do. do. 1d.

For advertising and selling, 2s. 6d.

WM. NILES, *Warden.*

J. B. STRATHY, *CLERK.*

BY-LAW

To Renew and Continue in force the By-Law No. 115, intituled "By-Law to raise a Sum of Money for the

Administration of Justice, the Improvement of Roads and Bridges, and other general purposes, in the District of London."

[Passed 7th February, 1848.]

WHEREAS it is expedient and necessary to renew and continue in force for the present year, the By-Law of this Council passed on the 5th February, 1847, and intituled, a "By-Law to raise a sum of money for the administration of justice, the improvement of roads, and bridges, and other general purposes, in the District of London"—it is therefore hereby enacted by the Council of the London District, that the By-Law above referred to shall be and the same is hereby renewed and continued in force for this year.

WM. NILES, Warden.

J. B. STRATHY, Clerk.

BY-LAW

To Raise certain Sums of Money for the purpose of Building School-Houses in the several School-Sections in the London District, therein mentioned.

[Passed 7th February, 1848.]

WHEREAS it is expedient to raise the several sums of money hereinafter mentioned, for the purposes herein stated—it is therefore hereby enacted by the Council of the London District, that the following sums shall be raised in the following School Sections respectively, for the purpose of building School-Houses therein, viz.—the sum of fifty pounds in school-section number two, and the sum of fifty pounds in school-section number five, in the Township of Malahide; the sum of fifty pounds in school-section number nine, and the sum of fifty pounds in school-section number eight, in the Township of Southwold; the sum of twenty-five

pounds in school-section number two in the Township of Williams; the sum of twenty-five pounds in school-section number five in the Township of Ekfrid; the sum of forty-two pounds and ten shillings in school-section number three, the sum of forty-six pounds eleven shillings and five-pence half-penny in school-section number five, and the sum of seventy-five pounds in school-section number eighteen, in the Township of London; and the sum of thirty pounds in union school-section number four in the Township of London, and number one in the Township of Dorchester, northern division.

It is further enacted, That it shall be the duty of the Assessors of the respective Townships in which the school-sections and parts of school-sections abovementioned, as well as of those mentioned in the By-Law passed by this Council on 6th February, 1847, and intituled a "By-Law to raise certain sums of money for the purpose of building School-Houses in the London District," are situate, and the Assessors are hereby required to make a return to the Clerk of the Peace of the rateable property belonging to the inhabitants of the several school-sections above referred to, at the same time that the general assessment of their respective Townships is returned by them.

It is further enacted, That the above sums shall be raised by levying the same upon the rateable property of the inhabitants of the respective school-sections abovementioned; and the Clerk of the Peace is hereby required and authorized to impose the said assessments over and above the expenses of levying and collecting the same, by placing the same in a separate column on the proper collector's roll of this year.

It is further enacted, That the above sums shall be raised, levied, collected, and paid over to the District Treasurer, in the same manner as rates have heretofore been raised, levied, collected, and paid over.

And it is further enacted, That the said sums shall be paid by the Treasurer to the parties entitled to re-

ceive the same, on the warrant of the Warden, under the same conditions and provisions as are contained in the By-Law of this Council above referred to, and the Resolution of the Council passed at this Session.

WM. NILES, *Warden.*

J. B. STRATHY, *CLERK.*

BY-LAW

To Raise certain Sums of Money in the several School-Sections therein mentioned for the payment of Teachers' Salaries, and for other purposes therein mentioned.

[Passed 7th February, 1848.]

WHEREAS the Trustees of the respective school-sections herein mentioned, have petitioned this Council that the following sums should be raised in the said school-sections, for the purposes hereinafter mentioned—it is therefore hereby enacted by the Council of the London District, that the sum of twenty-eight pounds shall be raised in school-section number eight in the Township of Westminster, and the sum of forty-five pounds in school-section number eight in the Township of Yarmouth, for the purpose of paying the teachers' salaries in said school-sections.

It is further enacted, That the sum of twenty pounds shall be raised in school-section number seventeen in the Township of Yarmouth, for the purpose of defraying the expense of repairing the school-house, purchasing stoves, fuel, and for other necessary current expenses of said school-section.

It is further enacted, That it shall be the duty of the Assessors of the respective Townships in which the school-sections abovementioned are situate, and the said Assessors are hereby required to make a return to the

Clerk of the Peace, of the rateable property of the inhabitants of the said school-sections, at the same time as the general assessment is returned by them.

It is further enacted, That the above sums shall be raised by levying the same upon the rateable property of the inhabitants of said school-sections, and the Clerk of the Peace is hereby required and authorized to impose the said assessments, over and above the expenses of levying and collecting the same, by placing the same in a separate column on the proper collector's roll of this year.

And it is further enacted, That the above sums shall be raised, levied, collected and paid over to the District Superintendent of Common Schools, in the same manner and within the period fixed by Law, for other rates and assessments; and shall be applied by the District Superintendent for the purposes above specified.

WM. NILES, *Warden.*

J. B. STRATHY, *Clerk.*

BY-LAW

To Raise the sum of £2,067 for the support and maintenance of Common Schools in the London District.

[Passed 7th February, 1848.]

WHEREAS it is expedient to raise a sum of money for the support and maintenance of Common Schools in this District—it is therefore hereby enacted by the Council of the London District, that the sum of two thousand and sixty-seven pounds shall be raised and levied on the rateable assessed property of the inhabitants of this District for Common School purposes this year, and to make up the deficiency in the sum to be raised for last year, and shall be paid over by the respective collec-

tors to the District Superintendant of Common Schools, deducting their per centage as regulated by a By-Law of this Council, within the period fixed by law for the payment of other rates to the Treasurer of the District.

And it is further enacted, That the said sum shall be apportioned, over and above the expenses of collection, on all the rateable property of the inhabitants of this District, and placed by the Clerk of the Peace in a separate column of the proper collector's roll of this year; and shall be levied and collected in the same manner as other rates and assessments have heretofore been levied and collected.

WM. NILES, *Warden.*

J. B. STRATHY, *CLERK.*

BY - L A W

To appropriate the sum of £2500 for the Improvement of Roads and Bridges in the District of London.

[Passed 7th February, 1848.]

WHEREAS it is expedient to appropriate a sum of money amongst the several Townships in this District, for the purpose of improving the Roads and Bridges therein—it is therefore hereby enacted by the Council of the London District, that the sum of £2500 of the general funds of this District, be, and the same is hereby appropriated for the improvement of Roads and Bridges therein, to be apportioned as follows: that is to say, to the

Township of London	£313	Township of Ekfrid	£71
“ Yarmouth	340	“ Mosa	93
“ Southwold	240	“ Adelaide	75
“ Westminster	244	“ Metcalfe	54
“ Malahide	191	“ Aldborough	62
“ Bayham	191	“ Dunwich	108
“ Delaware	58	“ Dorchester	159
“ Lobo	123	“ Williams	67
“ Caradoc	111		
			<u>£2500</u>

It is further enacted, That the Councillors of the different Townships shall, and they are hereby authorized to apportion the sums appropriated to their respective Townships, and to appoint commissioners to superintend the expenditure thereof.

And it is further enacted, That the above sums shall be paid by the Treasurer on the Warrant of the Warden signed in open Council, on the certificate of the respective Councillors, and on affidavit being made by the commissioners appointed to superintend the work, that the same has been duly performed.

WM. NILES, *Warden.*

J. B. STRATHY, *CLERK.*

BY - L A W

To authorize the raising of the sum of £1500 by District Debentures.

[Passed 7th February, 1848.]

WHEREAS it is expedient and necessary to raise the sum of fifteen hundred pounds for the purpose of paying for Common School-Houses which have been built under the By-Law of this Council passed on the 6th February, 1847, and for other District purposes—it is therefore hereby enacted by the Council of the London District, that it shall be lawful for the Warden and Treasurer of this District, and they are hereby authorized to raise the sum of one thousand five hundred pounds, or so much thereof as may be required, on the security of District Debentures, which they are hereby authorized to issue for sums of one hundred pounds each, bearing interest at six per cent., and payable at such times as they may decide.

And it is further enacted that the general funds of this District shall be and they are hereby declared liable for the payment of said Debentures.

WM. NILES, *Warden.*

J. B. STRATHY, *CLERK.*

hools,
law of
e pay-
ct.
shall be
ction,
f this
separ-
year;
ner as
levied

arden.

ent of

8.

um of
s Dis-
ridges
ouncil
of the
ereby
ridges
y, to

£71
93
75
54
62
108
159
67

500

BY-LAW

To raise the sum of £50 in the Townships of Aldborough and Mosa, for the purpose of assisting to erect a Bridge across the River Thames at Wardsville.

[Passed 7th February, 1838.]

WHEREAS it is expedient to raise the sum of fifty pounds in the Townships of Aldborough and Mosa towards defraying the expense of erecting a Bridge across the River Thames at Wardsville—it is therefore hereby enacted by the Council of the London District, that the sum of fifty pounds shall be raised on the taxable property in said Township for the purposes abovementioned.

And it is further enacted, That the above sum shall be raised, levied, collected and paid over to the District Treasurer in the same manner as other rates have heretofore been raised, levied, collected and paid over; and the Clerk of the Peace is hereby authorized and required to impose said assessment over and above the expenses of collecting the same, by placing the same upon the proper collector's roll for this year in a separate column; or such part of said assessment as can be collected, having regard to the limitation of the powers of this Council of imposing taxes.

WM. NILES, Warden.

J. B. STRATHY, Clerk.

ough
ridge

3.
fifty
Mosa
cross
ereby
that
xable
men-

shall
strict
here-
; and
d re-
e the
same
arate
col-
ers of

den.

